



Maya Nastoba
Je suis

About Maya Nashoba

Maya Nashoba, formerly known as just Maya, has rebranded herself after five years of musical exploration under her previous name. She's making a grand return with an all-French repertoire, and her debut album is out everywhere on the 15th march 2024.

Her artistic odyssey began in 2017 with her maiden EP, "**Mavi Bon'jouk**", where she blended her mother's native tongue with French, proudly celebrating her Belgian-Turkish heritage. It's a harmonious fusion of the Orient and the Occident.

She continues to tread this path with her sophomore EP, "**En Chemin**" (On the Path) a subtle concoction of pop-folk sprinkled with Oriental influences. In this album, she lays herself bare, showcasing her tenderness and vulnerability while embracing moments of melancholy and nostalgia.

This journey has transformed her, and the change is palpable. **In search of direction and answers**, she decided to listen to herself more closely, both personally and musically.

In her **quest for humanity**, she draws inspiration from the strength and wisdom of the wolf, an animal that reminds her of the importance of trusting her instincts, even when they seem hidden from view. "**Nashoba**" means **wolf in Native American**.

Now, she writes her lyrics in French independently. These are words that spring from the depths, **written urgently, in a raw and essential manner**. Embracing this renewal, in which she plays with the balance of life on a daily basis, she's assembled a new dream team: Johan Barra for composition and artistic direction, and Nico D'Avell for music production.

Her debut album is scheduled for a spring 2024 release. Each track on the album unveils a facet of Maya Nashoba. This is the path she's chosen to embrace her true self and discover who she really is. Emotions are ever-present, weaving a tapestry of vulnerability, tenderness, maturity, and wisdom. This new album is a blend of purity, lightness, and depth, and it's undeniably organic.

The live concert **release party** is scheduled on the **12th of April** at the **Ferme du Biéreau** venue in Louvain-La-Neuve.

The singles

[Listen](#)



Spotify

+ 85 000 streams

Radios

Chérie FM
Nostalgie
BXI
BXfm
Neo Radio
RCF
MCS
Sud Radio
...

[Listen](#)



Spotify

+ 80 000 streams

New Music Friday
Equal
Restez Branché

[Listen](#)



Spotify

New Music Friday
Equal
Restez Branché

[Listen](#)



Spotify

New Music Friday
Equal
Restez Branché

Radios

Chérie FM
Radio Alpha (Fr)

Medias

TV com : [pause culture](#) (at 14'30)
Chérie FM : [portait chinois](#) and [acoustic live](#)
Néo radio : [interview](#)
Arabel : [interview](#) (at 48'10)
Brussels is her : [podcast](#)
L'avenir : [article](#) by Julie Mouvet
RCF, Bx_fm ...

Music videos



Live sessions



Concerts 2024

18 mars - European sommet « Mons beats for Europe » - Mons (duo)

12 avril - RELEASE PARTY Ferme du Biéreau - LLN

17 avril - Support act **Philippine Lavrey** - Théâtre du Peigné - Verviers

20 avril - Jardin de ma soeur - Brussels (duo)

12 septembre - Place aux artistes - Grez-Doiceau

4 octobre - CC de Courcelles

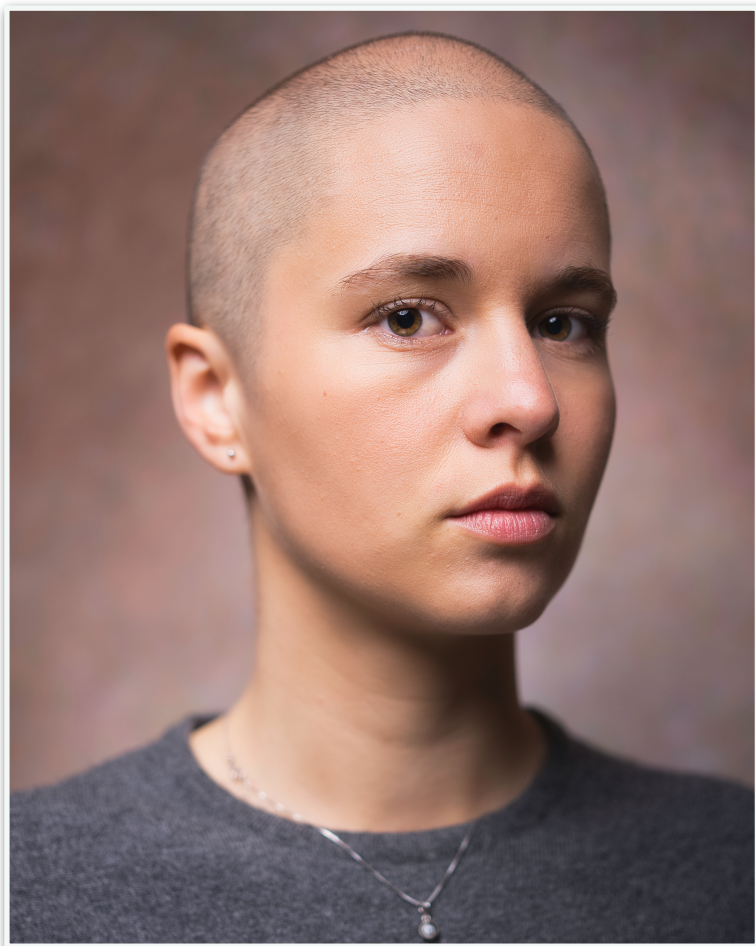
5 octobre - Abbaye de Villers-la-Ville

6 octobre - CC de Leopoldsburg

Past concerts

More than 300 concerts included Saule's support act, Inc Rock, F'Estivales de Walhain, Caravane aux chansons, Ferme du Biéreau, Chapelle de Profondsart, Fermaculture, Tricoterie, Wacolor, Maison de la poésie, La spirale, Sofar Leuven ...





Contact

Management and booking

Alev Sarc
sarcalev@gmail.com
+32 477 636593

Funds

Wallonie Bruxelles Musique
Sabam for Culture



[Linktree](#)



[Spotify](#)



[Instagram](#)



[Facebook](#)



[Youtube](#)



[Tik Tok](#)



[Deezer](#)